

ALZHEIMER'S & LYME DISEASE



Groundbreaking Study

By Dr. Richard Horowitz

New research exploring a connection between infection and brain health.

Journal of Alzheimer's Disease Reports
Published April 27, 2026

To Read More
Subscribe to Dr. Horowitz's
Medical Detective Series
on Substack





PRE-ORDER TODAY

ENDING CHRONIC ILLNESS



Richard I. Horowitz, MD

New York Times bestselling author of
Why Can't I Get Better?

PRE-ORDER NOW!

Use code **RICHARD15** for 15% off
Includes a signed bookplate.



Scan to pre-order your copy today!

Offer valid through the day before
the official **October 2026** release date.

“Remarkable new insight.”

—DALE E. BREDSSEN, MD, *New York Times*
bestselling author of *The End of Alzheimer's*

ENDING CHRONIC ILLNESS

**A REVOLUTIONARY NEW
PROGRAM TO REVERSE
INFLAMMATION AND HEAL
PERSISTENT DISEASE**

Richard I. Horowitz, MD

New York Times bestselling author of
Why Can't I Get Better?

The Medical Detective Series



Weekly insights
on chronic illness



Deep dives
Lyme, Babesia,
Bartonella, mold & dementia



Real-world
Clinical insights

Dr. Horowitz's Medical Detective Series
SUBSCRIBE TO SERIES ON SUBSTACK

New research delivered weekly

*Scan
to subscribe*



Elevating Awareness

- Education
- Prevention
- Research
- Advocacy
- Patient Support





Elevating Awareness in Colorado

Education

Elevating awareness through education



Prevention

Increasing tick-bite prevention, education and awareness



Research

Collaborating for ticks surveillance in CO





Providing Patient Support Nationally

Advocacy

Fighting for increased federal funding of Lyme & other TBDs and elevated awareness in CO & beyond

Patient Support

Providing patient resources, education brochures, Dr. Search database & patient centered events

LymeAid 4 Kids

Providing grants for children in need of tick-borne disease testing and treatment



**Community Partners Support COTBDAA Activities
& Collaborate on Common Goals:**

Insect Shield

Sawyer Products

IGeneX, Inc.

Ravel Health

Soul Tribe Yoga Collective

Chaffee County Public Health

Center for Lyme Action

VectorWise CME

Bird Conservancy of the Rockies



**Colorado Tick-Borne Disease
Awareness Association**



Colorado Tick-Borne Disease
Awareness Association



WEBSITE

www.coloradoticks.org

EMAIL

info@coloradoticks.org

SOCIAL MEDIA

[@coloradoticks](https://www.instagram.com/coloradoticks)





lymedisease.org

POWERED BY PATIENTS



WHAT WE DO

EDUCATE

Trusted information for patients and families

RESEARCH

MyLymeData powers real-world insights

ADVOCATE

Improving policy, funding, and access to care

SUPPORT

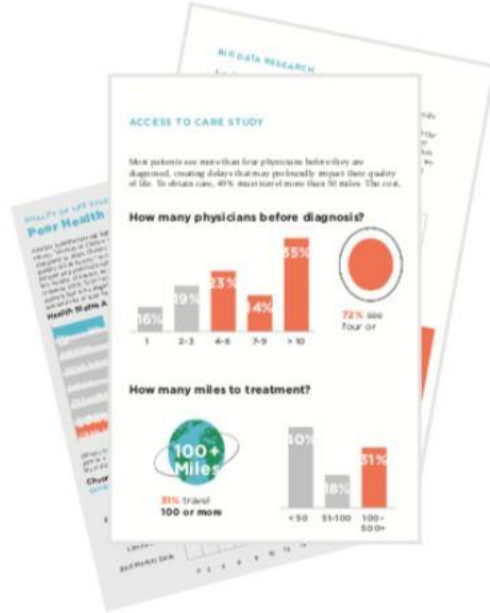
Resources, physician directory, support groups and community.

STAY INFORMED. STAY CONNECTED.

 Follow us on Facebook

 Sign up for our newsletter

Our Impact



- 20,000 enrolled
- 5 million data points
- 4 peer-reviewed studies
- 2 text book highlights
- 4 scientific posters
- 7 white papers
- 40 presentations
- 60 federal report references
- 4 conferences convened
- 1st clinical trial recruited

MyLymeData gives patients a voice.

Your data helps drive research, influence policy, and bring real change to Lyme disease care.

Add your Lyme Data to **MyLymeData** today by signing up online.



STRONGER TOGETHER



Join thousands of patients,
caregivers, and advocates.
Find answers. Get support. Take action.

BECOME A MEMBER





***We have been serving the Kansas City
Metro and surrounding states since 1993
helping patients and educating physicians
about tick-borne diseases.***

Lyme Association of Greater Kansas City, Inc.

501(C)(3) tax-deductible nonprofit organization

P.O. Box 785, Belton MO 64012

913-438-5963 www.facebook.com/LAGKC/ www.Lymefight.info

May is Lyme Awareness Month

Lyme Association of Greater Kansas City



- ▶ Lone Star ticks (creators of Alpha-Gal Syndrome) are prevalent in Missouri and Kansas. Kansas City is on the Missouri and Kansas state lines. There are no boundaries with ticks despite what a patient might be told. We travel and they travel! Stay aware!



Lyme Association of Greater Kansas City, Inc.
501(C)(3) tax-deductible nonprofit organization
P.O. Box 785, Belton MO 64012

913-438-5963 www.facebook.com/LAGKC/ www.Lymefight.info

Lyme Association of Greater Kansas City (LAGKC)

You are welcome to join our Support Group Zoom Meetings on the Second (2nd) Tuesday of each month (excluding Nov/Dec).

Tick Removal kits are available and may be ordered directly on our website at www.lymefight.info Kits are sold in quantities of 5 at \$40.00 each.

The LAGKC accepts donations so we may continue our work in the Midwest as we provide educational supplies, attend doctor conferences and host special activities. You may scan the QR Code below and we THANK YOU!





Minnesota Lyme Association is a 501(c)(3) non-profit organization that seeks to provide a supportive environment for people affected by Lyme and other tick-borne diseases and to educate the public and health professionals in the prevention, diagnosis, and effective treatment of these diseases.





**Minnesota Lyme Association meets the second Tuesday
of each month at 6:30 pm on Zoom for:**

- **a support group or**
- **to hear a speaker on a related health topic**

**On May 30th we're getting together for an in person
open house at an area park to celebrate 20 years of
educating and supporting each other**





Website:

www.mnlyme.org

Email:

lyme@mnlyme.org

Social:

Find us on Facebook @
"Minnesota Lyme
Association"



This presentation brought to you by



Healing Chronic Illness / Tick-Borne Diseases & Preventing Future Cognitive Decline

Medical Disclaimer

Hosted by:

- Colorado Tick-Borne Disease Awareness Association
- Lyme Association of Greater Kansas City
- LymeDisease.Org
- Minnesota Lyme Association



Presenter: Richard Horowitz, MD

The information presented during this webinar is for educational and informational purposes only. The views and opinions expressed by the presenter are their own and do not necessarily reflect those of the hosting organizations listed above.

Nothing in this webinar is intended to serve as medical advice, diagnosis, or treatment. The content should not be used as a substitute for professional medical advice from your physician or other qualified healthcare provider. Always seek the advice of your healthcare provider regarding any medical condition or treatment decisions.

Participation in this webinar, including asking questions or submitting comments, does not create a doctor-patient relationship between participants and the presenter.

The hosting organizations do not provide medical services and assume no responsibility or liability for any decisions made based on the information presented during this webinar.